



ISSN 2982-3730

Founded by Asia Design Week

Design and Art Studies

Journal Homepage: <https://das.cultechpub.com/>

Artwork

Type & Fade: A Mechanical Performance of Writing, Temporality, and Erasure

Yuzhe Feng ^{1,*}¹ College of Arts, Media and Design (CAMD), Northeastern University Boston, Boston, MA02115, United States* Corresponding author: feng.yuzh@northeastern.edu

Artwork Description

“It types. It vanishes.” In an age saturated with information, every word is born already teetering on the edge of disappearance. This installation stages a slow, deliberate performance of expression and erasure. A line of synchronized servo motors brings a vintage typewriter to life, striking each key with mechanical precision—as if resisting the speed of the digital world, insisting on presence. But permanence is an illusion. Before the ink has time to settle into the fibers of the paper, a silent shredder hums below, ready to consume the freshly printed page. The words emerge only to be erased. They are spoken, but never quite heard. Remembered, but only in passing. This is not merely a machine. It is a temporal interface. A choreography of disappearance. A metaphor for the present moment—where expression and extinction arrive hand in hand, and every attempt at permanence becomes part of the cycle of forgetting.

Keywords

Mechanical translation; Ephemeral writing; Servo choreography; Information decay; Human-machine interface

<https://doi.org/10.64229/das202601si102>

Biography of the First Author

Yuzhe Feng graduated from the College of Arts, Media and Design (CAMD) at Northeastern University in Boston, majoring in Design. He is an artist and designer whose work centers on interaction, culture, and future-oriented narratives. His practice spans visual arts, installation, and new media, often juxtaposing bodily perception, digital systems, and traditional materials to explore the ever-shifting relationship between humans and their environment. For him, creative work is both a way to reconsider life and a pathway to re-understanding memory and one's place in the world.



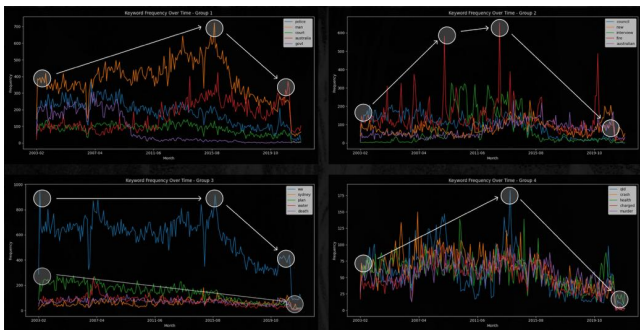


Figure 1. Temporal patterns of keyword frequency in news coverage, illustrating repeated cycles of emergence, amplification, and disappearance.

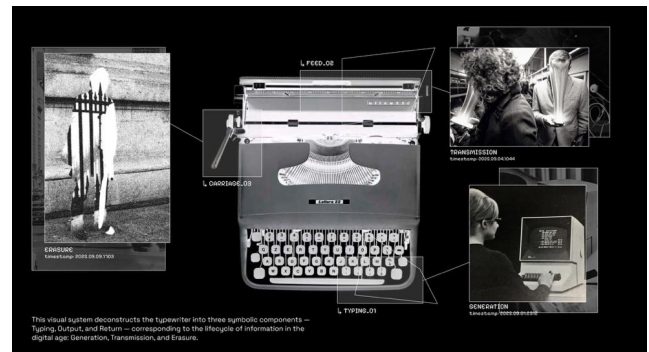


Figure 2. Conceptual deconstruction of the typewriter as a metaphor for the information lifecycle.

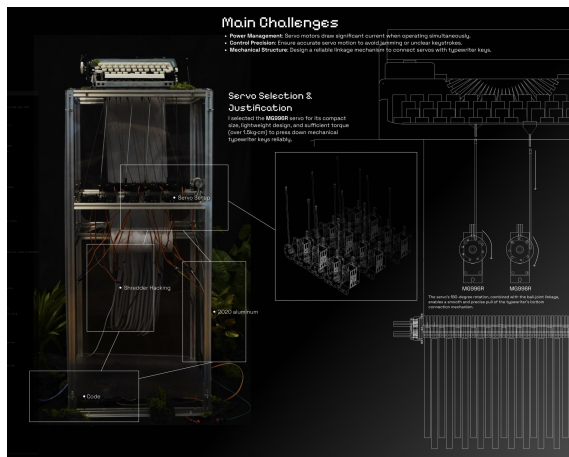


Figure 3. Technical architecture of the Type & Fade installation, illustrating the integration of mechanical, electronic, and computational components.



Figure 4. Type & Fade installation overview, featuring a servo-driven vintage typewriter and an integrated paper-shredding mechanism.

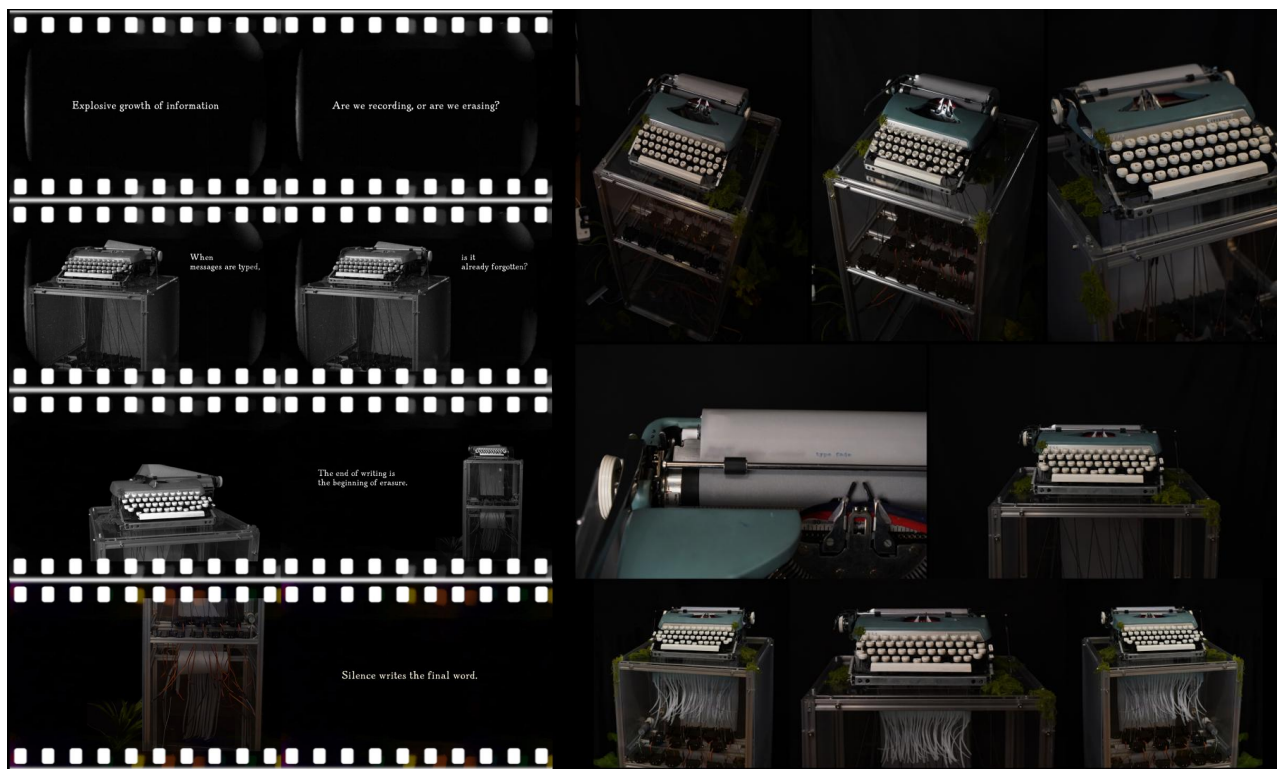


Figure 5. More picture about the device.